

# Newsletter

SHARING CHRIST'S LOVE  
WITH THE WORLD

Volume 7 Issue 7

July 2010

**Sunday**  
**Worship Services**  
8:00 a.m. & 10:30 a.m.

## FOOD CONNECTION INVITATION

Inside this issue:	
<i>Pastors and Church Council</i>	2
<i>Supporting/Growing Ministries</i>	3
<i>Parish Life</i>	3/4
<i>Serving Ministries</i>	4/5
<i>Discipleship Ministries</i>	6/7
<i>Worship Ministries</i>	7
<i>Proclaiming Ministries</i>	8/9
<i>Birthdays/Anniversaries</i>	10
<i>Church Calendar</i>	11



St. Paul members are cordially invited to the opening ceremony of the Community Food Connection. It will be held at our new location, 311 Whitecrest Drive, Maryville. This ceremony will take place on Saturday, July 17, at 3:00 p.m. The CFC would be especially appreciative to have as guests our St. Paul members, who furnish enthusiastic support year after year for the Food Connection. Congressman John Duncan and CFC President Dean Moss will speak on this occasion. Pastor Kevin Strickland will offer the benediction. You will have the opportunity to view the new building and see how the CFC provides food for those who need food assistance. You can park either at the Oak Street Baptist Church (beside Dubbs Restaurant) or at Crestview Bowling Lane, and then use the free shuttle service to the CFC building. Come and join us on this day of celebration.

For questions, please call me at 983-0788. Frank Rutherford

## ABOUT COMMUNITY FOOD CONNECTION

Community Food Connection provides one bag of food to each family that asks for assistance. Families may return after two weeks.

To sign up, clients are asked to bring a picture form of ID (Not their Social security number) - driver's license or green card is fine... we can also accept food stamp card numbers..... They need to have birth dates and names of every member of their household.

Mailing address for correspondence and donations:

CFC  
P.O. Box 786  
Alcoa, TN 37701

Our Hours are:

Mon, Wed and Sat from 10:00 am until 2:00 pm

For more information:  
977-4400



## PASTORS AND CHURCH COUNCIL

From council president:

Your church council has been debating and taking action over the past few months which have a profound effect on the life of the church. Council takes the call which you have elected them to very seriously. These actions which are upsetting to some have been made in the best interest to offset our current financial position. This will set us on the course to long term financial stability with our church finances. We appreciate the input many of you have given to individual council members and the information that was shared at the June 13th open forum. Ideas, opinions and solutions offered are wide ranging. Pleasing everyone is regrettably impossible.

We have been spending more than we receive in monthly offerings on regular bases for over six years. The down turn in the economy, the loss of members and members withholding gifts to the church as a result of the ELCA action last year have compounded this problem. This has happened just when it appeared St. Paul's growth and stewardship were about to get us financially healthy. The reductions in ministry program funding and staff reductions will reduce our projected expenses by \$40,000 for the remainder of the year. These cuts are in all areas of the church and affect everyone. We are hopeful that these cuts are not permanent and that as our cash flow improves we will be able to reinstate some of these items.

St. Paul is not alone in this. Having attended the Southeastern Synod Assembly a couple of weeks ago, virtually all the 177 churches in our Synod have had to cut programs and reduce staff. The council is also looking at the endowment fund for our churches building debt as a way our church can become financially sound, as we continue growing, being alive with a vision for the future. On behalf of the church council I thank you all for your prayers and support as we work through this time.

May the peace of the Lord be with you all!

Tom Sims Council President

### With Thanksgiving to God!

As I prepare an article for this month's newsletter at St. Paul, I write with a very profound sense of thanksgiving to God for the ways in which his Spirit has led – and strengthened – and driven us forward over the better part of the last two years! I am, indeed, very grateful for the opportunity to have deepened relationships with many within the St. Paul family, -- for the remarkable ways in which this congregation has responded to Gospel proclamation and programmatic leadership, -- and for the privilege of working collaboratively with your Pastor.

I am also grateful for the opportunity to now return to a more complete degree of retirement! As many of you know, I am blessed with an interest in several different hobbies (some might say 'obsessions'), and it will be a great joy to exercise the freedom from work-responsibilities that allows me to pursue these activities.

From my perspective at this point, there is no doubt that the Gospel of Jesus Christ has touched the people of St. Paul in extraordinary ways during your history, and that is surely cause for ALL of us to give thanks to God! To have been a part of that history has been a blessing, and I pray, earnestly, that the ministries which take place in and through St. Paul will move from strength to strength and that the challenges of faithfulness will empower your serving!

Although the capacity in which I have served has changed, I will continue to be available to the Congregation as various needs arise. In that awareness, I look forward to continued involvement with the people of St. Paul as we move into God's future.

Pastor Krogmann

## SUPPORTING/GROWING MINISTRIES

### MESSAGE FROM YOUR FINANCIAL SECRETARY

The July 2010 through June 2011 Contribution Year at Saint Paul begins July 1. For those of you who use envelope packets, new ones are out in the hall for pickup. Note that your envelope number may have changed. If you currently have a packet but don't plan to use the envelopes, please contact me so the envelope packet can be used by someone else. If you don't see a packet with your name on it and want one, please contact me.

In May, 11 Saint Paul families began using their bank's on-line system to make contributions to

Saint Paul through our account at Mountain National Bank (MNB). At first direct electronic transfer is not be available, but our bank's checks will be routed to the MNB branch on 411 for deposit. MNB representatives are hopeful that several banks will be able to electronically transfer directly to our MNB account later this year. If you are interested, please contact me and I will send you information to get started.

You can contact me at 865-405-9474 or 423-884-6317 or [hpcp2@tds.net](mailto:hpcp2@tds.net).

Herb Perry

## PARISH LIFE MINISTRIES

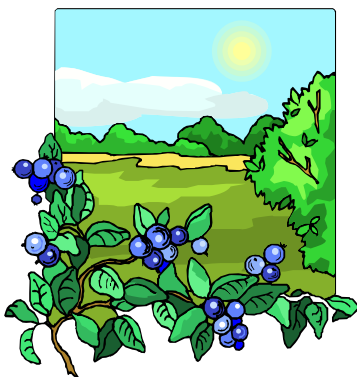


WELCA has a cart filled with opportunities for you to recycle items that will be useful to others. Used eyeglasses are donated to the Lion's Club, used ink cartridges are donated to a no-kill animal shelter, paper back books are donated to a women's prison...the list goes on. Many labels are collected—a list is found on the top shelf of the cart. Used cell phones can be refurbished and used again. Pop tops and stamps are also collected. Items for health kits distributed by Lutheran World Relief can also be contributed. These will be used around the world in times of disaster.

A health kit consists of a dark colored hand towel, a washcloth, bath size bar of soap, toothbrush in its original packaging, sturdy comb, metal nail file or nail clippers with file attached, and ¾ " band-aids. Place any of these items in the appropriate spot in the cart. Check the chart on the bulletin board to see what items are needed to complete health kits.

The cart and bulletin board are located near Richardson Hall, just past our member folders.

Every woman who is a member of St. Paul is a member of WELCA and is invited to all of the group's activities.



### Blueberry Picking

Come and pick some blueberries at the Falls Blueberry Fields on Thursday July 22<sup>nd</sup>. We will leave from church at 5:45PM, or meet us there at 6:30. This is open to everyone. If you have any questions, please contact Marcy Ward 382-5131.

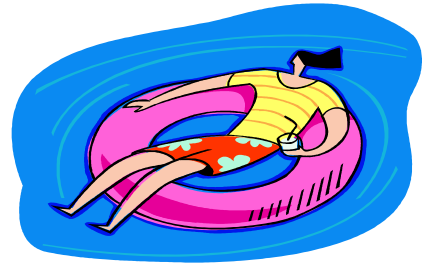


## PARISH LIFE MINISTRIES

### St. Paul Adult Ministries July 20th

We will convene at Ann Jordan and Paula Kenworthy's Home, at 1509 Dunbarton Dr. at 3PM. Bring wine and appetizers and a swim suit, if you feel like a swim.

All Seniors are invited---get to know each other.



### Plan Ahead

Aug 17th, slide show on Lima, Peru by McClellan, at the church. Pizza Lunch? Maybe!



### Lutheran Loungers

**Thursday, July 1, 8:30 a.m.**

Cracker Barrel, Alcoa

771 Louisville Rd. Alcoa

Contact: Jim & Ann Hall—681-8220



### BUNCH

**Thursday, July 22, 11:30 a.m.**

Olive Garden

244 Hamilton Crossing Dr., Alcoa

Contact Person: Lorraine Geary 984-1124

**Saturday, July 24 1:00 p.m.**

Cheddars

250 Hamilton Crossing Dr., Alcoa

Contact Person: Mary Frank 984-2153

## SERVING MINISTRIES

### First Aid Class Offered

On Sept. 25<sup>th</sup> we will be having a First Aid class from 9:00am to 12 noon in Richardson Hall. The cost is \$20.00 with an addition \$10.00 for first aid supplies; for a total of \$30.00. There will be a class limit of 10 individuals and sign up will end on Sept. 12th. Susan Johnson is a certified trainer with the American Heart Association and will be leading our group. If you are at all interested, please make sure you sign up on the list on the administrative board. If you have any questions, please contact Judy Krull at 977-4361.

### Family Promise Host Week: July 4-10

St. Paul will be home to the Family Promise guests the first week in July. Many volunteers are required to make this ministry possible and St. Paul is blessed to have many members with servant hearts. If you're not already involved in this ministry and would like to experience first-hand what it means to be a host for this ministry, our host week is the perfect opportunity. Contact Laura Mallette (712-7743) or Karin Bell (924-9016) and we can make arrangements for you to 'visit' during our host week to learn more about this ministry. St. Paul is one of thirteen host

congregations in the Blount County Interfaith Hospitality Network of Family Promise. Together with our partner church, Our Lady of Fatima, we host all guests in the program for one week, Sunday evening through the following Sunday morning, once every thirteen weeks. More information about Family Promise is available at [www.blountfamilypromise.org](http://www.blountfamilypromise.org).

### Gift for Gabriel

Gabriel Wright is an intelligent, loving, beautiful 4-year-old member of our congregation who is challenged with autism. We are blessed to have had him accepted into the Wilderwood Service Dog program which will provide assistance to him and comfort to his family. Please help Gabriel get a service dog.

### **7/17/2010 White Elephant/Bake Sale/ Hot dog sale**

Time: Early (7 or 8 am)

Location: St. Paul Lutheran Church

Donations of items or baked goods will be appreciated and volunteers are welcome.

Contact Heather Wright at 865 748-5025 for more information or check out Gabriel's web site

[www.giftforgabriel.com](http://www.giftforgabriel.com)

## SERVING MINISTRIES



July 2010

It is a joy to be part of Cross of Grace Lutheran Church. We are growing, not very fast, but new people keep being interested in this new mission. I keep being amazed at the love, support, and interest shown to one another. The other day I commented that we “keep plodding along.” I was corrected. The person expressed joy in the progress of the mission and reminded me we are not just “plodding.”

I also keep being amazed at the presence of God and God’s support. We struggled with the location, but where we are couldn’t be better. We were concerned about the necessities for worship. All fell into place. A musician is of first priority for a good worship service. We have never gone wanting. Financially we are not strong, but we are stable. Due to the gifts of the Treasurer, John Stamm, we know where we are at all times and how well we are doing. Individual worshippers keep coming forward to suggest and provide means by which we can have fellowship, proclaim the gospel, and reach out as we say, “God’s work, our hands.”

One of those suggestions is to get together once a month for lunch at a place that has reasonable prices and where we can meet privately. The first luncheon for the “Lunch Bunch” will be at the Cranberry Thistle. It’s located on Main Street, in Jonesborough, across from the old county courthouse. We will meet on Thursday, July 8, the second Thursday of the month, at 12:00 noon. All are welcome. While this is an opportunity to invite people who might be interested in Cross of Grace, it is all an opportunity to share with other people from other denominations or some of our own Lutheran sisters and brothers.

The big event on the horizon is our entry in the Jonesborough Days Parade, which occurs on Saturday, July 3. The parade begins at 10:00 AM. We will have our logo positioned on the back of a pickup truck with many of our worshippers walking behind it with Cross of Grace tee shirts. With over 10,000 people observing the parade, it will be a great opportunity for awareness.

We hope to keep thinking of ways to proclaim the gospel.

Ed Wolff, Mission Pastor  
 1103 Miller Drive  
 Jonesborough, TN 37659  
 Cell: (423) 833-8932  
 Church: (423) 833-8587

## DISCIPLESHIP MINISTRIES

### Sunday School News:

We are taking a break from Sunday school during July and look forward to our fall term, which begins in August with Rally Day on August 8 during the Sunday school hour. Classes will begin the following Sunday, August 15. The Sunday School Planning Team wants to thank our S.S. teachers for their time and dedication to our children this past teaching year:



#### Sunday School Opening

Angela Culliton and Rebecca Rowland

#### Preschool

Erika & Thom Johnson

#### Kindergarten & 1st Grade

Glenda Baack

#### Second & Third Grade

Marcy & Jeff Ward

#### Fourth, Fifth & Sixth Grade

Chris Mallette and Winnie Johnson

#### Seventh & Eighth Grade

Tami & Greg Wyatt

#### High School

Valari Burts

---

Watch SPEN and check the Information Kiosk in the Welcome Center for Sunday School announcements.

---

### Nursery attendants needed!!!

#### Help!!!

Nursery volunteers needed for Sunday mornings and some Wednesday evenings during Advent and Lent.

A background check is needed, as well as love and patience in dealing with our adorable children. Please contact Helen Johnson if you wish to help in the nursery.

### Vacation Bible School:

**A Big Thanks to all those who helped make, Baobab Blast: God's Great Get-Together!, VBS a great success.** It takes a lot of time, planning and dedication to provide the music, Bible stories, Bible study, crafts and games to keep a large group of active kids and youth excited about the experience. As always we had plenty of older youth and adults who showed up every night to lend a hand. What a blessing for all those who took part!



Thanks to Pastor Kevin for leading our Adult Bible study every night.

### School supplies for children of Haiti

We are collecting school supplies for children of Haiti during VBS and will continue thru July 15th. We are asking all children of God to participate in this effort. The youth of VBS will be decorating school bags and those bags will be filled with the supplies that we collect. There is a box in the welcoming center for supplies.

#### Here is the list of items needed for each bag:

- ◆ Notebooks of wide or college ruled paper approximately 8" x 10 1/2" totaling 150 sheets ( if using 70 sheet notebook, please include 3) no loose leaf paper.
- ◆ 1 blunt scissors (safety scissors)
- ◆ 1 -30 centimeter ruler or a ruler with centimeters on one side and inches on the other
- ◆ 1 pencil sharpener
- ◆ 6 new unsharpened no. 2 pencils with erasers; secured with a rubber band
- ◆ 1 eraser 2 1/2" long
- ◆ 12 sheets of construction paper in assorted colors
- ◆ 1 box of 16 or 24 crayons

# Wednesday Night **FAITH ALIVE**

A great time was had by over one hundred congregation members who attended the WNFA Carnival on Wednesday night, May 10, 2010. Thanks to all the volunteers who helped with this special activity.

We began with a delicious meal featuring the famous Joe King Bar-B-Que and the Fowler Family Pasta Salad, concluding with a variety of fabulous desserts furnished by attending church members.

At six o'clock, game activities featuring Carla McMillion at the Cupcake Walk, Brian Kaufman with Musical Chairs, Beth Drane and the Rubber Duck Pond, Laura King, with Dana Conzemius and Emily Johnson, to assist with Face Painting, Paste the Pastors sponsored by Suzanne and Warren Bielenberg, Perry McClellan's Bean Bags and Golf Balls monitored by Merl Krull, and the Water Balloon Relay choreographed by Lane McGinnis with the able assistance of Hannah Bryant and Kenny Raymond.

A special thank you to our dinner organizer Marcy Ward and her assistants Laura King and Joan Foster, JB Johnson for providing the Safety Cones, Darla Kaufman for orchestrating the kitchen cleanup, and Joey King, Isaac Bryant, Chris Ward and Micah Walker for their able assistance in setting up and taking down the seating and table arrangements.

The Grande Finale was the late but timely arrival of the Maryville Fire Department's Station #3 Fire Truck with Firefighters Charles Martinez and Dallas Stephens who provided fire safety tips, treks through the fire truck, Junior Firefighter Hats and Badges and a final siren farewell when they left to return to the station.

Wednesday Night Faith Alive will return in the Fall with new programs for all ages. Have a great summer, everyone.

## **WORSHIP MINISTRIES**

### **COMMUNION**

Since Memorial Day weekend, you have noticed a change in the service of communion on Sunday mornings. As part of the savings efforts, communion will be by intinction at both services. As always, you will receive a wafer from the pastor, but now you will *DIP THE WAFER INTO EITHER THE WINE OR GRAPE JUICE* offered by the communion assistants. The larger chalice contains the wine. We have used this method of communion on Christmas and Easter previously. *Remember Christ is present even if you take just one element.*

### **USHERS**

Recruitment efforts are slower in the summer when so many are on vacation and that means our ushers really need your help. Please thank the ushers for their efforts and ask how you can help.

### **ALTAR GUILD**

New members are always welcomed to prepare the altar for communion on Sundays. Other ways one can volunteer would be doing the linens each week or sewing. If you are interested in any phase of the Guild, please speak to Marsha Bryant or any person serving our church.

### **FLOWER CHART**

If you would like to donate a special flower arrangement in honor or in memory of someone, a large sign-up chart is on a bulletin board (on the right) just prior to entering Richardson Hall. The cost of an arrangement is posted and payable to the Church.

## PROCLAIMING MINISTRIES

# All are Welcome. . .

At St. Paul Lutheran Church we welcome all people in the name of Christ regardless of their gender, sex, race, creed, or economic status. We welcome people to come home and worship with us, dine with us, and be part of this family of faith. But what do visitors think, see, and feel when they walk into our church for the first time?

The Barna Institute of Research has stated that 40% of visitors have made up their minds about a church before they even meet the pastor. Within the first two minutes of the beginning of the service visitors have formed an opinion of whether the congregation is friendly or not. So, if we believe that all are welcome. If we believe that St. Paul is a place of grace for all who enter our doors, how can we be living intentional organizations of hospitality and welcome?

Try some of the following:

### Be Intentional about Saying Hello and Good Bye

□ Escort newcomers to the nursery, classrooms, coffee hour, etc. Don't just point the way or give directions.

□ Adopt the "rule of three," which says members will not talk to other members in the first three minutes following the service – typically how long it takes guests to exit.

### But How?

□ Enact the "circle of ten" rule – that each member will greet anyone, member or guest, who comes within ten feet of them.

□ Say, "I don't think we've met before ..." if you are not sure if the person next to you is a member or a visitor.

□ Ask outgoing church members to sit in the pews where visitors most commonly sit, often near the entrance or in the back.

□ Post someone at every exit to shake hands and thank people for coming. Ask worship participants (readers, music leaders, liturgists, etc.,) to do this since their faces will be familiar.

### Be More Inviting

□ Hold an Open House Sunday at least once a year.

□ Organize a "bring-a-friend" Sunday at least once a year.

□ Extend extra hospitality during back-to-school time, Christmas and Easter, when persons are most likely to consider visiting a church.

□ Start a personal invitation ministry. Three out of four people attend a church for the first time because they were invited. Yet less than half of church members say they have invited someone in the last year.

## Our Newest Members!



### Bruce and Alice Andrews

Bruce and Alice moved to Maryville after residing in Florida for 35 years. The beauty and serenity of East TN greatly influenced their

decision to retire here. Both are originally from Wisconsin—Bruce was born in Milwaukee and Alice in Door County. Bruce spent his working years in the automobile and motorcycle industries. Alice retired with nearly 40 years in secondary and postsecondary education as a classroom teacher and curriculum specialist.

Both enjoy all types of car racing, especially NASCAR and NHRA, the Green Bay Packers, touring on their Harley-Davidson and their nine-year old German Shepherd dog.



### The Blackman Family Brian, Lacey, Savannah and Sean

Brian and Lacey have lived in Tennessee for 10 years. Brian is a Software

Engineering Consultant and Lacey is a stay-at-home mom. They have 2 children together.

## PROCLAIMING MINISTRIES

### Our Newest Members!

Savannah is 6 years old and starting the first grade and Sean is 4 years old and starting pre-K. Lacey home-school's both children. Brian enjoys re-building his motorcycles and Lacey enjoys reading and scrapbooking. They have been Lutheran for many years and are transferring from Messiah Lutheran in Knoxville.



#### **Thelma Fastner**

My history begins in the beautiful forests of Northern Minnesota. My parents were immigrants from Finland who had six children. Three sons and three daughters; we were all baptized and confirmed in

the Suomi Lutheran Church. Frank and I lived in Naperville, IL near Chicago for 60 years. Our family includes four daughters, four grandchildren, and five great granddaughters. Frank is an electrical engineer and I have a sales and marketing background.

My church history is primarily Lutheran, however I taught Sunday School at Grace Evangelical Methodist. I was a charter member of St. Timothy Lutheran Church in Naperville, IL for many years and then transferred to Trinity Lutheran in Lisle, IL.



#### **Janet and Harry Kocotos**

Janet and Harry Kocotos moved to Maryville from Basking Ridge, New Jersey during 2001 after retiring from State service. Both Janet and Harry were employed by the State of New

Jersey Division of Youth and Family Services. Janet grew up in New Jersey and graduated from Muhlenberg College in Allentown Pennsylvania. She began a career in social work with the State of New Jersey as a caseworker and then as a litigation specialist dealing with child abuse and neglect. Upon moving to Maryville, Janet was employed as a social worker at Colonial Hills

Nursing Home, retiring in 2009. Janet loves to cook, garden and sew.

Harry grew up in New Jersey. Harry earned his BA from Calvin College, M. Div. from Drew University, and his Clinical Pastoral Certificate from Belvidere, Memorial Hospital. Harry served for 12 years as a Pastor in the Dutch reformed Church. Harry, second career was with the State of New Jersey doing initial investigations of child abuse and neglect. Upon moving to Maryville, Harry was employed as a Case Manager for the Chronic Mentally ill. Harry loves to read and explore Theology and American Revolutionary History.

Janet and Harry together have four children and six grandchildren with one due in August. Two children live in New Jersey, one in New York State and one in VA.

#### **The Sheets Family (no photo available)**

##### **Chris , Kristen, Emma and Liam**

Chris and Kristen moved to Maryville, TN in 2005 from Columbia, SC. Chris and Kristen graduated from Lenoir-Rhyne College in Hickory, NC ('97,'98) and were married in Spartanburg, SC at St. John's Lutheran Church in April 2002. They have two children, Emma (age 4) and Liam (age 2). Chris is an auditor with TVA and Kristen is a pediatrician at East Tennessee Children's Hospital. The Sheets family enjoys traveling, snow skiing, and attending USC football games.

---

#### **23<sup>rd</sup> Annual Southeastern Synod Assembly**

Pastor Strickland, Tom Sims and Marsha Bryant attended the 23<sup>rd</sup> Annual Southeastern Synod Assembly June 4-6, 2010 in Chattanooga, with Karisa Strickland attending Friday night and most of Saturday as a visitor. The Southeastern Synod website, [www.elca-ses.org/Assembly.html](http://www.elca-ses.org/Assembly.html), has posted information about the Assembly.



# JULY 2010

## Birthdays & Anniversaries

### BIRTHDAYS

July 2	Cheryl Kenney	July 19	DeeDee Walker
July 4	Jim Pitts	July 20	Ed Kreider
July 5	Helen Johnson	July 20	Dorothy Bronkhorst
July 7	Patty Rostad	July 20	Herb Perry
July 8	Leona Patty	July 20	Jacqueline Conzemius
July 8	Katey Henriksen	July 24	Walter Hawsey
July 11	Valari Burts	July 24	Mike Culross
July 11	Marion Burchfield	July 24	Philip Tyler
July 12	Carol Galyon	July 26	Charlie Malin
July 13	Sara Merkord	July 26	Stu Ulseth
July 14	Bertha Franks	July 28	Jim Foster
July 14	Patty Harmon	July 28	Chuck White
July 15	Elizabeth Box	July 29	Frank Lassiter
July 19	Suzette Stauffer	July 30	Laura King

### ANNIVERSARIES

July 1	Thom and Erika Johnson
July 2	Jim and Ann Hall
July 2	Jim and Sharon Pitts
July 5	Kurt and Gail Vollman
July 12	Dallas and Dorine Keeble
July 14	Keith and Ruth Law
July 27	James and Carolyn Speck

Sunday	Monday	Tuesday	Wednesday	Thursday	Friday	Saturday
27	28	29	30	1	2	3
6pm - VBS-Vacation Bible School 8am - Worship 10:30am - Worship	9am - Staff Meeting 9:30am - Via de	10am - Risk 6:30pm - GS Troop #	10am - PRAYER	8:30am - Lutheran 11am - Community 7pm - Men in	Pastor Kevin's Day	
4	5	6	7	8	9	10
5pm - Family Promise 8am - Worship 10:30am - Worship	INDEPENDENCE DAY OFFICE CLOSED 9:30am - Via de	10am - Comm Food 6:30pm - GS Troop # 7pm - Youth &	10am - PRAYER	6pm - Thrivent 7pm - WELCA Bible	Pastor Kevin's Day	
11	12	13	14	15	16	17
LOGOS Youth Conference						
Family Promise 8am - Worship 10:30am - Worship	9am - Staff Meeting 9:30am - Via de	5pm - Property 6pm - GS Troop #74 6:30pm - GS Troop #	10am - PRAYER	Newsletter Deadline 10am - Women of	Pastor Kevin's Day	Gabriel Wright Fund
18	19	20	21	22	23	24
8am - Worship 10:30am - Worship	9am - Staff Meeting 9:30am - Via de 7:30pm - Council	6:30pm - GS Troop #	10am - PRAYER	11:30am - Out to 6:30pm - Blueberry 6:30pm - NAMM	Pastor Kevin's Day	1pm Out to Lunch 6pm - Youth Picnic
25	26	27	28	29	30	31
8am - Worship 10:30am - Worship	9am - Staff Meeting 9:30am - Via de	11:30am BCEAC 6pm - GS Troop #74 6:30pm - GS Troop #	10am - PRAYER		Pastor Kevin's Day	



*Sharing Christ's Love  
With the World*

429 Sandy Springs Road  
Maryville, TN 37803

Phone: 865-982-4285  
Fax: 865-977-8070  
E-mail: [splchurch@bellsouth.net](mailto:splchurch@bellsouth.net).  
Web : <http://www.stpaulmaryville.org/>

The Rev. Kevin L. Strickland, Pastor

Church Office Hours : 9:00 am—3:00pm  
Monday—Friday

If you no longer wish to receive this newsletter  
please contact the church office at 982-4285 or  
[splchurch@bellsouth.net](mailto:splchurch@bellsouth.net).

Thank You.

Non-Profit Org.  
**U.S. POSTAGE**  
**PAID**  
Maryville, TN  
Permit No. 128

«Mailing label»

«Address1»

«Address2»

«City», «State» «Zip code»

### **Dates of Interest**

July 4-11	Family Promise
July 11-17	LOGOS Youth Conference
July 17	Gabriel Wright Fund Raiser
July 17	Community Food Connection Grand Opening
July 22	Blueberry Picking at Falls Blueberry Fields
July 24	Youth Picnic at Pearson Springs